

830nm 1W Assembly

Introduction

Coupling 830nm 1w LD into silica fiber and two package optional, is widely adopted in CTP,medical, science research,etc.

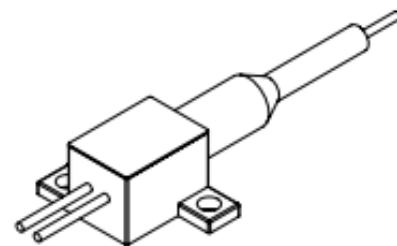
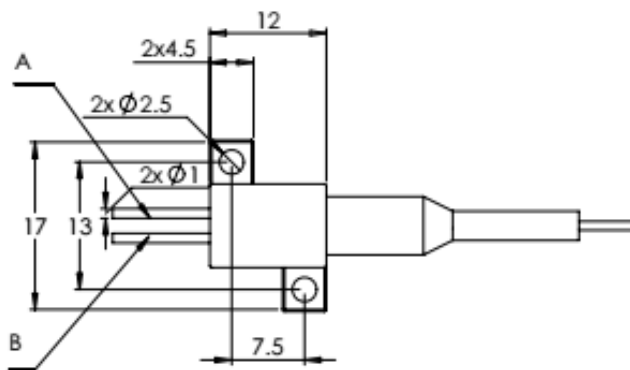
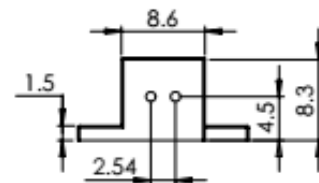
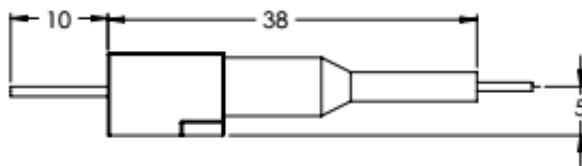
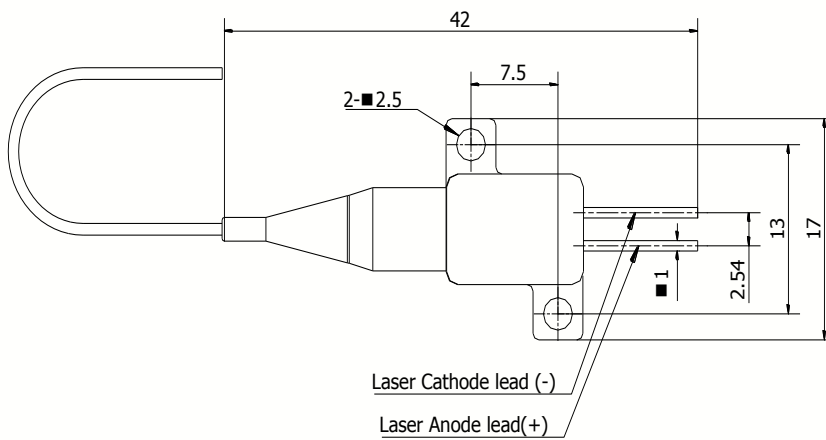
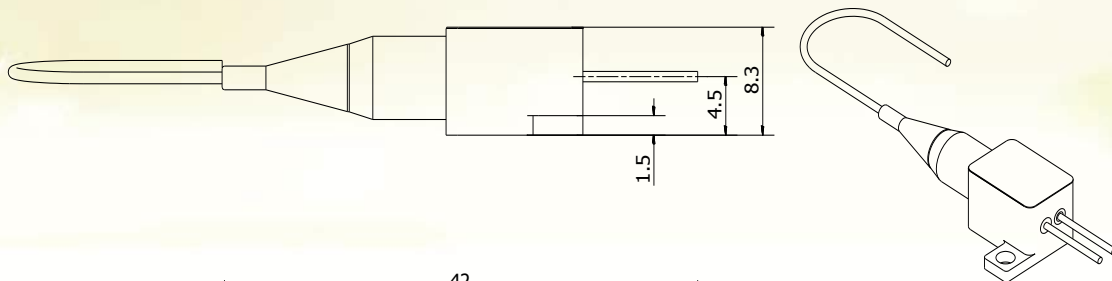


Parameters (25°C)

830nm 1W Assembly			
Parameter		Unit	FLMM-0830-D21-001W
Optical Parameter	Output Power	W	1
	Center Wavelength	nm	830±10
Electrical Parameter	Exchange Rate	%	70
	Threshold Current	A	0.22
	Operating Current	A	<1.5
	Operating Voltage	V	<2.30
	Reverse Voltage	V	2
Fiber Parameter	Fiber Core Diameter	μm	50
	Numerical Aperture	-	0.14
	Fiber Length	m	0.6
	Connector	-	ST
	Fiber Protection Tube		0.9mm pvc
	Operating Temperature	°C	15 ~ 25
	Storage Temperature	°C	-10 ~ 60
	Lead Soldering Temperature	°C	260(10 sec.)
Lifespan	>10,000h		



Package Information



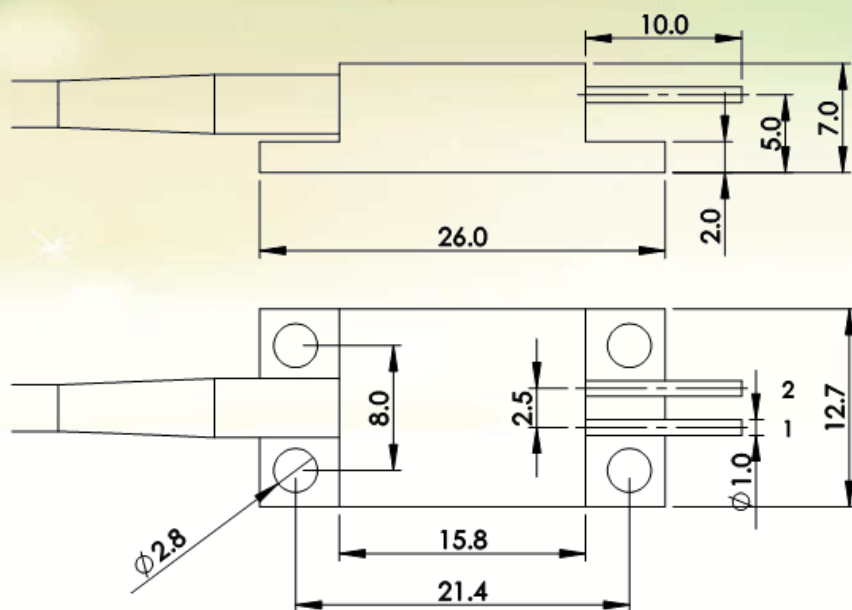
Pinout

Pin	Description
A	Laser anode (+)
B	Laser cathode (-)



Add: Shahe Industrial Park, Changping District, Beijing, China
Tel: +86-10-6076 9887 Fax: +86-10-6076 9887-699
Web: www.htoe.com.cn Email: sales@htoe.com.cn





Pin	Function
1	LD(+)
2	LD(-)

Notice

1. Item notice: FLMM(Item)--****(wavelength)-***(Package connector coolant)-****(optical output power).
2. Customized service includes Wavelength, output power, connector and fiber parameters.
3. The tube is gilded, internal nitrogen, parallel seam sealing.
4. Standard Fiber length is 60cm(customized),tube is environment protection white PVC.
5. More information, please contact Hi-Tech Optoelectronics Co., Ltd.

